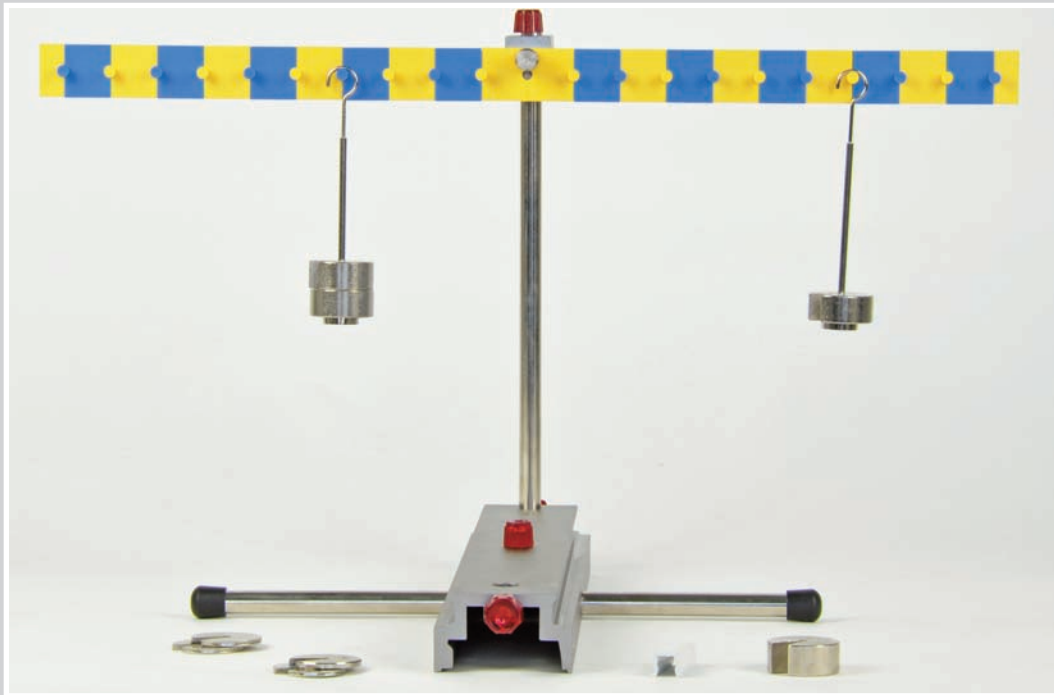


Required Kit:

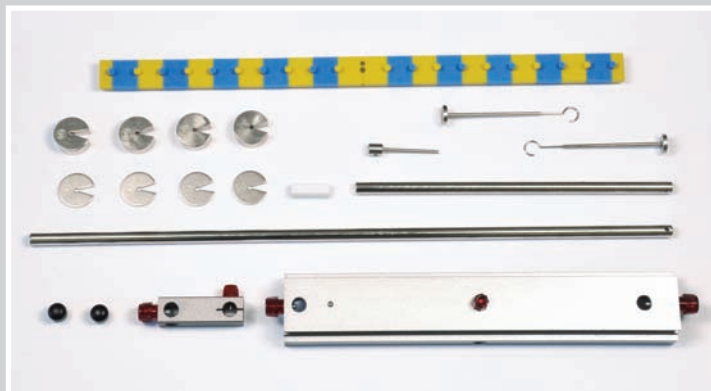
P9901-4A Rail stand material

P9901-4B Mechanics 1



Material:

- 2x Bearing pin
- 2x Stand rail 300 mm
- 2x Bosshead universal
- 1x Support rod 250 mm
- 2x End-cap for rods
- 1x Pointer for lever rod
- 4x Slotted weight 50g
- 4x Slotted weight 10g
- 2x Holder for slotted weights
- 2x Support rod 500 mm
- 1x Lever rod for balance



Required Kit:

P9901-4A Rail stand material
P9901-4B Mechanics 1



Material:

1x Bearing pin
1x Table clamp
1x Stand rail 300 mm
2x Bosshead universal
1x Bosshead round
2x Support rod 250 mm
1x Support rod 500 mm
1x Lever rod for balance
1x Dynamometer 2N

